

Welcome!

**Please add your name, organization and role in
the chat**





Wednesday, June 26, 2024; 12:00-1:00

Cal-IN Q2 2024 Peer Group Meeting Policy and Advocacy for BHI



Connecting today

Today, we'll:



Analyze opportunities to get involved with advocacy and policy furthering BHI in California



Brainstorm opportunities for collective action furthering BHI in California



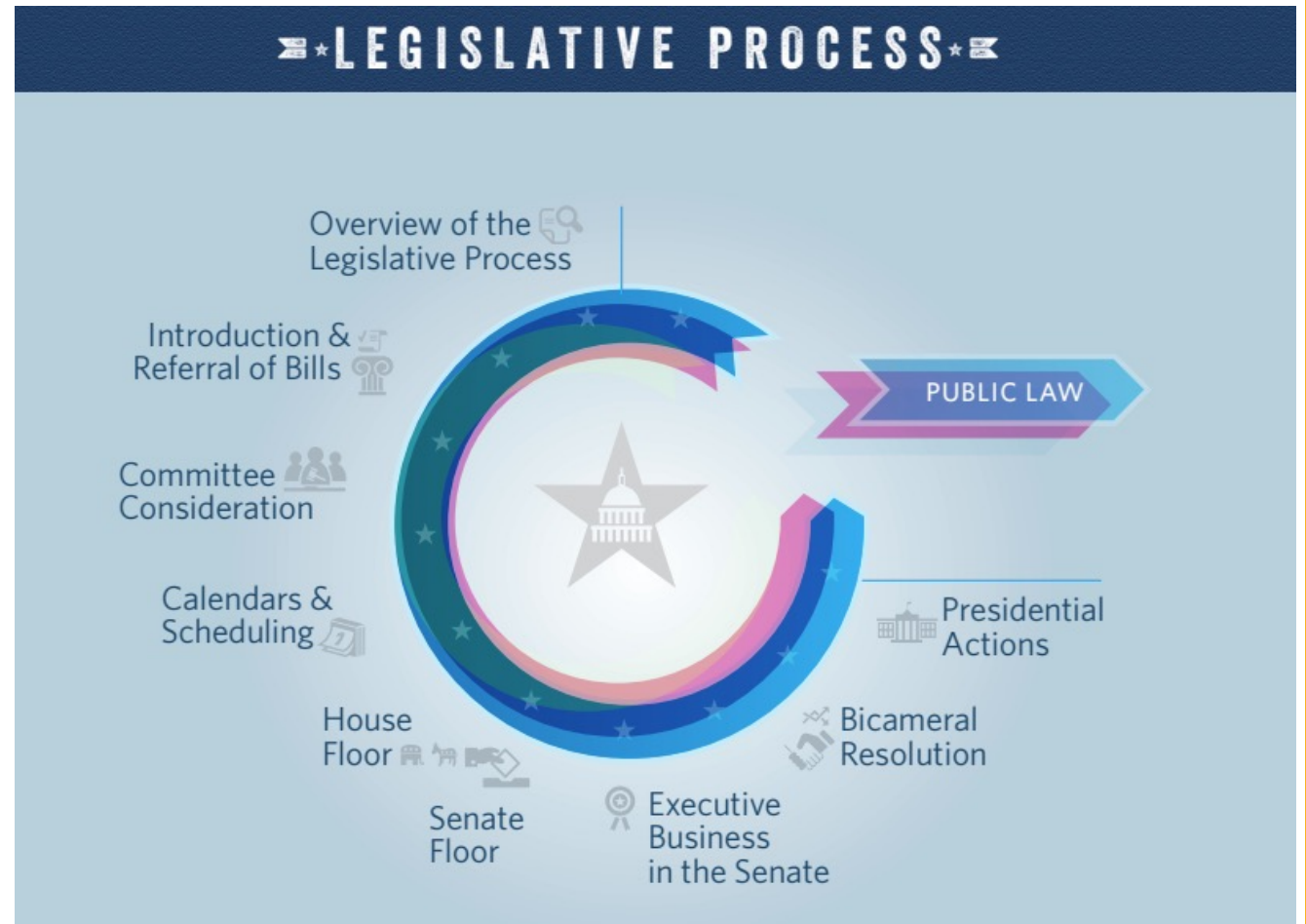
Connect with behavioral health integrated leaders in California

BEHAVIORAL HEALTH POLICY CHANGE

DANIELA VELA HERNANDEZ, LMFT

LAWMAKING BASICS

- Bills introduced by elected members only
- House
 - 435 members based on state population
 - 2-year term
- Senate
 - 2 per state
 - 6-year term



LAWS IMPACTING BEHAVIORAL HEALTH

- Committees and Subcommittees can hold hearings and ask for input from federal agencies.
- Subcommittees may recommend a bill but only a full Committee vote can advance bill.



COMMITTEES WITH JURISDICTION IN BH

Senate Committees: Health, Education, Labor, and Pension	House Committees: Energy and Commerce
<p>Department of Health and Human Services</p> <ul style="list-style-type: none">• Centers for Medicare and Medicaid• National Institutes of Health (NIH)• Substance Abuse Mental Health Services Administration (SAMHSA)• Agency for Health Care Research and Quality (AHRQ)• Health Resources and Services Administration (HRSA)	<p>Department of Health and Human Services</p> <ul style="list-style-type: none">• Private and public health insurance• Health information technology, privacy, and cybersecurity

WHO REPRESENTS CA?



[Find your representatives](#)

California

District	Name	Party	Office Room	Phone	Committee Assignment
1st	LaMalfa, Doug	R	408 CHOB	(202) 225-3076	Agriculture Natural Resources Transportation and Infrastructure
2nd	Huffman, Jared	D	2445 RHOB	(202) 225-5161	Natural Resources Transportation and Infrastructure
3rd	Kiley, Kevin	R	1032 LHOB	(202) 225-2523	Education and the Workforce Judiciary Transportation and Infrastructure
4th	Thompson, Mike	D	268 CHOB	(202) 225-3311	Ways and Means
5th	McClintock, Tom	R	2256 RHOB	(202) 225-2511	Budget Natural Resources Judiciary
6th	Bera, Ami	D	172 CHOB	(202) 225-5716	Foreign Affairs Intelligence Select Subcommittee on the Coronavirus Pandemic
7th	Matsui, Doris	D	2311 RHOB	(202) 225-7163	Energy and Commerce
8th	Garamendi, John	D	2004 RHOB	(202) 225-1880	Armed Services Select Subcommittee on the Weaponization of the Fed Govt Transportation and Infrastructure
9th	Harder, Josh	D	209 CHOB	(202) 225-4540	Appropriations
10th	DeSaulnier, Mark	D	503 CHOB	(202) 225-2095	Education and the Workforce Transportation and Infrastructure Ethics
11th	Pelosi, Nancy	D	1236 LHOB	(202) 225-4965	
12th	Lee, Barbara	D	2470 RHOB	(202) 225-2661	Appropriations Budget
13th	Duarte, John	R	1535 LHOB	(202) 225-1947	Agriculture Natural Resources Transportation and Infrastructure
14th	Swalwell, Eric	D	174 CHOB	(202) 225-5065	Homeland Security Judiciary
15th	Mullin, Kevin	D	1404 LHOB	(202) 225-3531	Natural Resources Science, Space, and Technology
16th	Eshoo, Anna	D	272 CHOB	(202) 225-8104	Energy and Commerce
17th	Khanna, Ro	D	306 CHOB	(202) 225-2631	Armed Services Oversight and Accountability Select Comm on the Strategic Competition US and China
18th	Lofgren, Zoe	D	1401 LHOB	(202) 225-3072	Judiciary Science, Space, and Technology
19th	Panetta, Jimmy	D	304 CHOB	(202) 225-2861	Armed Services Budget Ways and Means

CONGRESSIONAL MH CAUCUS

- The Congressional Mental Health Caucus serves as a bipartisan forum where Members of Congress and their staff can work together to elevate mental health issues as a national priority by holding informational briefings to pursue common legislative goals and raising awareness of important mental health issues



CAUCUS MEMBERSHIP LIST – 118TH CONGRESS

Updated: March 2023
 *** = New Caucus Member(s)

- | | | |
|---|---|---|
| 1. Bacon, Don (R-NE) | 42. Jackson Lee, Sheila (D-TX) | 81. Rutherford, John H. (R-FL) |
| 2. Balint, Becca (D-VT) | 43. Jayapal, Pramila (D-WA) | 82. Sablan, Gregorio Kilili Camacho (D-MP) |
| 3. Barr, Andy (R-KY) | 44. Kamlager-Dove, Sydney (D-CA) | 83. Salinas, Andrea (D-OR)
• Caucus Co-Chair |
| 4. Barragán, Nanette Diaz (D-CA) | 45. Kaptur, Marcy (D-OH) | 84. Sánchez, Linda T. (D-CA) |
| 5. Beyer, Don (D-VA)
• Caucus Co-Chair
• Chair, Suicide Prevention Task Force | 46. Kean, Thomas H. (R-NJ) | 85. Scanlon, Mary Gay (D-PA) |
| 6. Billrakis, Gus M. (R-FL) | 47. Keating, William R. (D-MA) | 86. Schiff, Adam B. (D-CA) |
| 7. Blunt Rochester, Lisa (D-DE) | 48. Kiggans, Jennifer A. (R-VA) | 87. Scott, David (D-GA) |
| 8. Boyle, Brendan F. (D-PA) | 49. Kilmer, Derek (D-WA)
• Co-Chair, Military Mental Health Task Force | 88. Sherrill, Mikie (D-NJ) |
| 9. Budzinski, Nikki (D-IL) | 50. Kim, Andy (D-NJ) | 89. Smith, Adam (D-WA) |
| 10. Calvert, Ken (R-CA) | 51. Kuster, Ann M. (D-NH) | 90. Soto, Darren (D-FL) |
| 11. Caraveo, Yadira (D-CO) | 52. Lee, Barbara (D-CA) | 91. Stansbury, Melanie Ann (D-NM) |
| 12. Cárdenas, Tony (D-CA)
• Chair, 988 & Crisis Services Task Force | 53. Lee, Susie (D-NV) | 92. Steube, W. Gregory (R-FL) |
| 13. Carson, André (D-IN) | 54. Leger Fernandez, Teresa (D-NM) | 93. Thanedar, Shri (D-MI) |
| 14. Carter, Earl L. "Buddy" (R-GA) | 55. Lieu, Ted (D-CA) | 94. Thompson, Glenn (R-PA) |
| 15. Carter, Troy (D-LA) | 56. Lynch, Stephen F. (D-MA) | 95. Thompson, Mike (D-CA) |
| 16. Cartwright, Matt (D-PA) | 57. Magaziner, Seth (D-RI) | 96. Tokuda, Jill N. (D-HI) |
| 17. Castor, Kathy (D-FL) | 58. Matsui, Doris O. (D-CA) | 97. Tonko, Paul (D-NY) |
| 18. Chu, Judy (D-CA) | 59. McBeth, Lucy (D-GA) | 98. Torres, Norma J. (D-CA) |
| 19. Clark, Katherine M. (D-MA) | 60. McCollum, Betty (D-MN) | 99. Torres, Ritchie (D-NY)*** |
| 20. Cleaver, Emanuel (D-MO) | 61. Miller, Carol D. (R-WV) | 100. Trone, David J. (D-MD) |
| 21. Cohen, Steve (D-TN) | 62. Miller-Meeks, Marianne (R-IA) | 101. Van Orden, Derrick (R-WI)
• Co-Chair, Military Mental Health Task Force |
| 22. Connolly, Gerald E. (D-VA) | 63. Moulton, Seth (D-MA) | 102. Veasey, Marc A. (D-TX) |
| 23. Correa, J. Luis (D-CA) | 64. Napolitano, Grace F. (D-CA)
• Caucus Co-Chair | 103. Wagner, Ann (R-MO) |
| 24. Craig, Angie (D-MN) | 65. Nickel, Wiley (D-NC) | 104. Watson Coleman, Bonnie (D-NJ) |
| 25. Crawford, Eric A. "Rick" (R-AR) | 66. Norcross, Donald (D-NJ) | 105. Wexton, Jennifer (D-VA) |
| 26. Davids, Sharice (D-KS) | 67. Norton, Eleanor Holmes (D-DC) | 106. Wild, Susan (D-PA) |
| 27. DeGette, Diana (D-CO) | 68. Omar, Ilhan (D-MN) | 107. Wilson, Joe (R-SC) |
| 28. DeSaulnier, Mark (D-CA) | 69. Panetta, Jimmy (D-CA) | 108. Wittman, Robert J. (R-VA) |
| 29. Dingell, Debbie (D-MI) | 70. Pappas, Chris (D-NH) | |
| 30. Doggett, Lloyd (D-TX) | 71. Payne, Donald M., Jr. (D-NJ) | |
| 31. Emmer, Tom (R-MN) | 72. Peltola, Mary Sattler (D-AK) | |
| 32. Escobar, Veronica (D-TX) | 73. Peters, Scott H. (D-CA) | |
| 33. Espalliat, Adriano (D-NY) | 74. Pingree, Chellie (D-ME) | |
| 34. Fitzpatrick, Brian K. (R-PA) | 75. Porter, Katie (D-CA) | |
| 35. Foster, Bill (D-IL) | 76. Pressley, Ayanna (D-MA) | |
| 36. Gallego, Ruben (D-AZ) | 77. Radewagen, Aumua Amata Coleman (R-AS) | |
| 37. Garcia, Sylvia R. (D-TX) | 78. Raskin, Jamie (D-MD) | |
| 38. Goldman, Daniel S. (D-NY) | 79. Reschenthaler, Guy (R-PA) | |
| 39. Graves, Garret (R-LA) | 80. Ruppersberger, C.A. Dutch (D-MD) | |
| 40. Grijalva, Raúl M. (D-AZ) | | |
| 41. Hoyle, Val T. (D-OR) | | |

WHAT IS IN THE WORKS?

The screenshot shows the California Legislative Information website. At the top, there is a navigation bar with links for [skip to content](#), [home](#), [accessibility](#), [FAQ](#), [feedback](#), [sitemap](#), and [login](#). Below this is a header with the California state seal and the text "California LEGISLATIVE INFORMATION". A secondary navigation bar contains tabs for [Home](#), [Bill Information](#), [California Law](#), [Publications](#), [Other Resources](#), [My Subscriptions](#), and [My Favorites](#).

The main content area is divided into three columns. The left column features a sidebar with sections: **TODAY'S SCHEDULE** (Mon, Jun 3, 2024), **FLOOR SCHEDULE** (including [ASSEMBLY FLOOR SESSION](#) and [SENATE FLOOR SESSION](#)), and **COMMITTEE HEARINGS** (including [ASM RULES](#), [SEN BUSINESS, PROFESSIONS AND ECONOMIC DEVELOPMENT](#), and [SEN HUMAN SERVICES](#)). The middle column has a **WELCOME** message, a paragraph about website enhancements, a link to <http://leginfo.ca.gov>, and a section for **Quick Bill Search** and **Quick Code Search**. The right column contains **Daily Updates**, **Daily Files**, and **Quick Links**.

WELCOME
Welcome to the California Legislative Information website!
We are pleased to announce new website enhancements to improve the readability of Bill and Code text. Multi-level indentation formatting has been implemented throughout the sections of each bill's "Text" tab. In addition, the new formatting has been added to all of the sections of text under the California Law.
Measures prior to 1999 can still be found at <http://leginfo.ca.gov> which will remain as an archive for legislative information.

To access a complete listing of California Law Codes and Bill Search features, click the California Law or Bill Information Tabs on the Tabbed Panel above.

Quick Bill Search: Bill Number Keywords(s)

Quick Code Search: Code Code Section Keywords(s)

Daily Updates
[Assembly Updates](#)
[Senate Updates](#)

Daily Files
[Assembly](#)
[Senate](#)

Quick Links
[Senate Video Archive](#)
[Assembly Video Archive](#)
[Downloadable Database](#)
[CA Agency Reports](#)
[Register to Vote](#)

Pursuant to Section 10248.5 of the Government Code, the information described in subdivision (a) of Section 10248 of the Government Code and made available on this Web site is within the public domain and the State of California retains no copyright or other proprietary interest in the information.

[Privacy and Conditions of Use Policy](#) [Website Accessibility Certification\[PDF\]](#)

[Do some research on your area](#)

WHO ARE YOUR ELECTED OFFICIALS?

Level	Role	Name
Federal	Senator	
	Representative (House)	
	Other BH Supporters	
State	Governor	
	Senator	
	Representative	
	Other BH Supporters	
Local	City Commission/Council	
	City Mayor	
	County Commission	
	County Elected Officials (Judges, Auditors, etc)	
	School Board	
	Other BH Supporters	

FEDERAL INITIATIVES / LEVERS

- HHS: [Roadmap for Behavioral Health Integration](#) (12/2022)
- CMS: Medicare covers [LMFTs and LCSWs](#) (as of 1/1/24)
- CMS: Mental Health Parity regulations [final expected Q2/Q3 2024]*
- CMS: 42 CFR Part 2 changes ease compliance complexities**
- CMS: piloting new [state IBH model](#)
- CMS/SAMSHA: CCBHS – 10 new states got accepted into demonstration program

* [Manatt: Mental Health Parity Update 2024: The Latest Regulatory and Litigation Trends](#)

** [Manatt: Changes to Substance Use Disorder Confidentiality Regulation: Implementations for Stakeholders](#)

STATEWIDE INITIATIVES

- Depression Screening and Follow Up Measure reporting: [IHA AMP testing](#), [MCAS reporting](#)
- [DMHC BH investigations](#) for health plans
- OHCA: to set [statewide spending target for 2025](#) (not for enforcement)
- DHCS [Behavioral Health Transformation](#) launches (Prop I)
- DHCS BH [Administrative Integration voluntary pilot](#)
- DHCS [FQHC Alternative Payment Methodology Pilot](#)
- DHCS [2023-2027 Strategic Plan](#)
- [DHCS Equity Roadmap](#) (to be released 2024/2025)

For Reference

- [California Health and Human Services Agency Org Chart](#) (rev 2/23)

STATEWIDE INITIATIVES (PROPOSED)

- State Bills [Proposed]
 - [SB 1320](#) - This bill would require a plan or insurer subject to the above-described coverage requirement, and its delegates, to establish a process to **reimburse providers for mental health and substance use disorder treatment services that are integrated with primary care services and provided under a contract or policy issued, amended, or renewed** on or after July 1, 2025. Because a willful violation of these provisions by a health care service plan would be a crime, the bill would impose a state-mandated local program.
 - Status: currently ordered to consent calendar (as of 6/20/24)

OTHER STATE EXAMPLES

- Oregon – [Behavioral Health Collaborative](#)
- Wisconsin – [Collaborative Care Model Policy](#)
- [Delta Center](#) – State Learning and Action Collaborative
- **Others? Please share!**

SHARING

- **What experience do you have with behavioral health/BHI policy and advocacy?**
- **What would you see as an opportunity for California to further BHI?**
- Phanit Dy, Director Community Defined Evidence Practice Implementation
- [California Institute for Behavioral Health Solutions](#)



OPEN DISCUSSION

1. How can we be clear on the definition and value of behavioral health integration in California?
2. Where do we see opportunities for policy / advocacy in California?
3. If you were going to work to advance policy supporting behavioral health integration, what might be your first step?

HOW TO STAY INFORMED

Federal/General

- HRSA: <https://www.hrsa.gov>
- SAMHSA: <https://www.samhsa.gov/>
- National Council: <https://www.thenationalcouncil.org/>
- Bipartisan Policy Center: <https://bipartisanpolicy.org>
- Farley Health Policy: <https://medschool.cuanschutz.edu/farleyhealthpolicycenter>
- Kennedy Forum: <https://www.thekennedyforum.org/>

CA

- DHCS Listserv <https://www.dhcs.ca.gov/Pages/DHCSListServ.aspx>



California Quality
Collaborative

CFHA



COLLABORATIVE
FAMILY HEALTHCARE
ASSOCIATION

Cal-IN Peer Group

Cal-IN Group

Collaborating, Connecting, Growing

Collaborating

- Collaboration space on [Basecamp](#)
 - Monthly basis: all registered/attended added to Basecamp
 - Members: can add documents, discussion question for Cal-IN
 - *Discuss – Any questions on how to use Basecamp?*

Connecting

- Peer Group Roster [[link](#)]
 - Opt-in document; link will be posted on Basecamp
 - Members can add: name, org, email, how long integrated, your strengths, what you want to talk about
 - *Discuss – Any other data to collect/share?*

Growing

- Inviting others to Cal-IN [[link](#)]

Cal-IN Group Upcoming Meetings

- **Upcoming Meetings**

- Wed., September 18, 12-1 – BHI Financing
- October 24 or 25: Table @ CFHA Conference in San Antonio
- Wed. December 4, 12-1 – Topic TBD
- *Discuss – Any volunteers to present? Topics to queue up?*

- **Discussion topics requested by group:**

- Sustainability, billing, maybe a breakout room for FQHCs, advocacy for changing laws to remove barriers to integration
- CalAIM, ECM, Value Based Payment
- Integrated healthcare in different settings, job possibilities, research/grant opportunities.
- Pediatric Collaborative Care
- Progress and barriers to progress- what worked well and what were struggles

Where the Modern Healthcare Team Gathers

3 Pillars of CFHA

Content

- Learning Opportunities
- In-Person & Virtual Conference
- Listserv

Community

- Special Interest Groups
- Workgroups
- Large BHI Community

Consultation

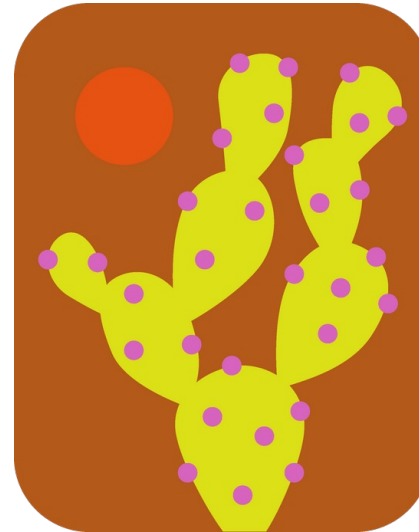
- Technical Assistance
- Tools & Resources for Organizations & Providers

2024 CFHA CONFERENCE

30 YEARS OF
INTEGRATION:
INNOVATING
IN THE PURSUIT
OF HEALING

SAN ANTONIO, TX

CELEBRATING
30 YEARS OF INTEGRATION



October 24th - 26th
Grand Hyatt
San Antonio River Walk

Registration Open!

<https://www.integratedcareconference.com/>

Behavioral Health Integration: Children and Youth Collaborative Learning Exchange (BHI-CYCLE)



- Applications open from now until August 31, 2024!
 - Accepted on a rolling basis
- In October 2024, CQC will launch a nine-month learning collaborative bringing together organizations experienced in integrating behavioral health services into primary care for children and youth
- **Participants will:**
 - Showcase successful practices
 - Spread adoption of new solutions
 - Share best practices in a public toolkit

More information:

- Visit the [BHI-CYCLE Website](#) (includes program prospectus and recruiting webinar)
- Contact: Kristina Mody | kmody@pbgh.org

CQC 2024 Project

Sustainable BHI Financing in Commercial Settings

2024

March

December



Interview provider organizations



Interview health plans



Synthesize and gain feedback on successful practices for providers and health plans



Publicly disseminate successful practices and recommendations

Objective: work across California to identify, synthesize and communicate successful practices to ensure sustainable payment for behavioral health integration (BHI) into primary care for commercial settings [[link](#)]

Contact: Kristina Mody | kmody@pbgh.org

Open Discussion / Sharing

- Burning questions?
- Needs?
- Resources?

Thank you!

- Cal-IN Collaboration Space
 - [Basecamp](#)

- Upcoming Cal-IN Meetings
 - Wed., September 18, 12-1 – BHI Financing
 - October 24 or 25: Table @ CFHA Conference in San Antonio
 - Wed. December 4, 12-1 – Topic TBD