



Welcome!

**Please add your name, organization and role in
the chat**



Wednesday, March 20, 2024; 11:00-12:00

Inspire, Inform, Connect: Shaping Behavioral Health Integration in California

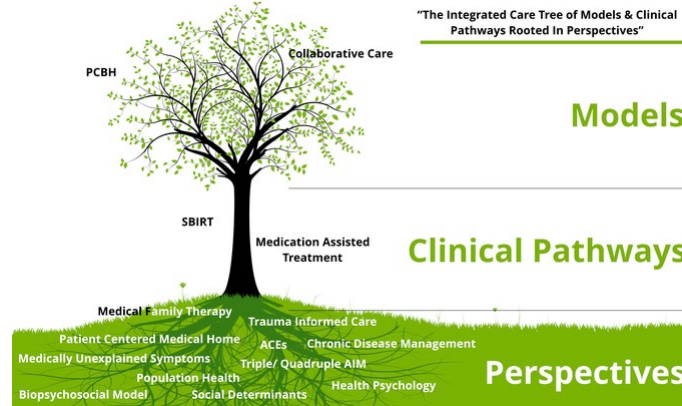


Connecting today

Today, we'll:



Connect with other integrated peers in California



Share behavioral health integration experience (including challenges and successes)



Brainstorm and commit to opportunities to collaborate together in the future

Where the Modern Healthcare Team Gathers

3 Pillars of CFHA

Content

- Learning Opportunities
- In-Person & Virtual Conference
- Listserv

Community

- Special Interest Groups
- Workgroups
- Large BHI Community

Consultation

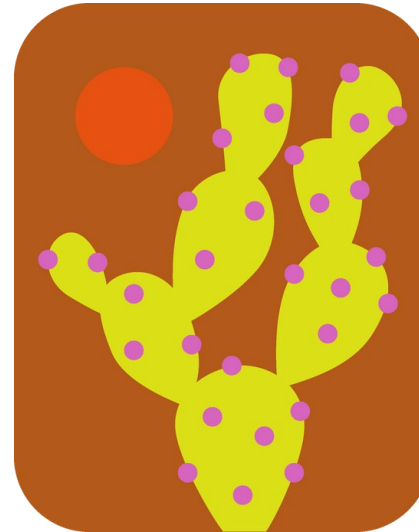
- Technical Assistance
- Tools & Resources for Organizations & Providers

2024 CFHA CONFERENCE

30 YEARS OF
INTEGRATION:
INNOVATING
IN THE PURSUIT
OF HEALING

SAN ANTONIO, TX

CELEBRATING
30 YEARS OF INTEGRATION



October 24th - 26th
Grand Hyatt
San Antonio River Walk

Registration Opens June 1st

<https://www.integratedcareconference.com/>

California Quality Collaborative (CQC)

Advancing the quality and efficiency of the outpatient health care delivery system by creating scalable, measurable improvement.

Launched in 2007, CQC is a **multi-stakeholder program**. Core funding is from health plans sharing a delivery system.

CQC identifies and spreads best practices across the outpatient delivery system in California

The program trains 2,000 individuals from 250 organizations each year

CQC's track record includes **20% relative improvement** in clinical outcomes and **10:1 ROI**

Sponsors



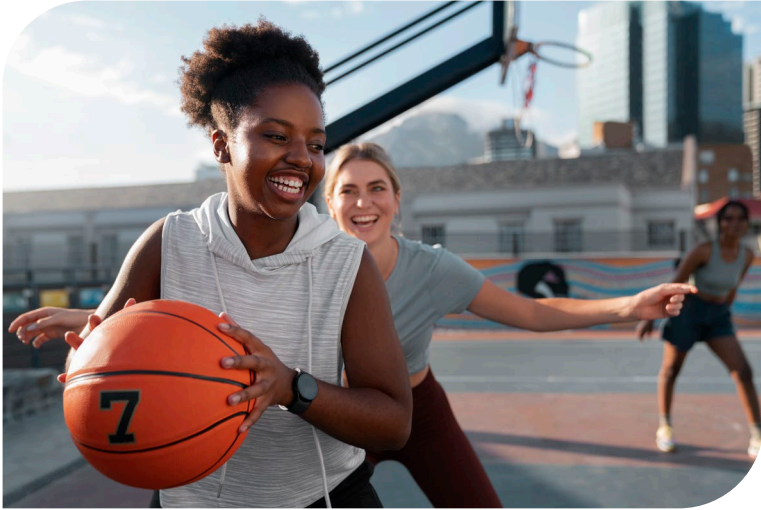
CalHIVE BHI Behavioral Health Integration Improvement Collaborative

A 3-year improvement collaborative (July 2023 – June 2026) that will focus on integrating behavioral health services into the primary care setting. The collaborative supports 8 organizations to:

- Define and implement a BH integration pathway
- Increase access to BH within the primary care setting to support management depression and substance abuse issues
- Improve behavioral health and chronic disease outcomes across key indicators



Behavioral Health Integration: Children and Youth Collaborative Learning Exchange (BHI-CYCLE)



- In October 2024, CQC will launch a nine-month learning collaborative bringing together organizations experienced in integrating behavioral health services into primary care for children and youth
- **Participants will:**
 - Showcase successful practices
 - Spread adoption of new solutions
 - Share best practices in a public toolkit

More information:

- Visit the [BHI-CYCLE Website](#)
- Register for to attend the [public recruiting webinar](#) on June 5th, 2024
- Prospectus to be released in April 2024
- Contact: Kristina Mody | kmody@pbgh.org

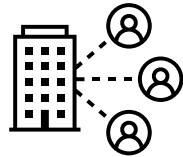


CQC 2024 Project: Sustainable BHI Financing

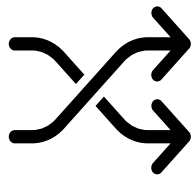
2024



Interview provider organizations



Interview health plans
(medical and behavioral)



Synthesize and get feedback
on successful practices for
providers and health plans



Publicly disseminate
successful practices

Objective: work across California to identify, synthesize and communicate successful practices to ensure sustainable payment for behavioral health integration (BHI) into primary care for commercial settings

More about you...

What do you find most impactful about BHI integration?

Come off mute or let us know in the chat!



Poll: Who's in the (virtual) room?

Where are you dialing in from?

- Bay Area
- Los Angeles County
- San Diego County
- Orange County
- Inland Empire
- Central Coast
- Sacramento
- San Joaquin Valley
- North Coast

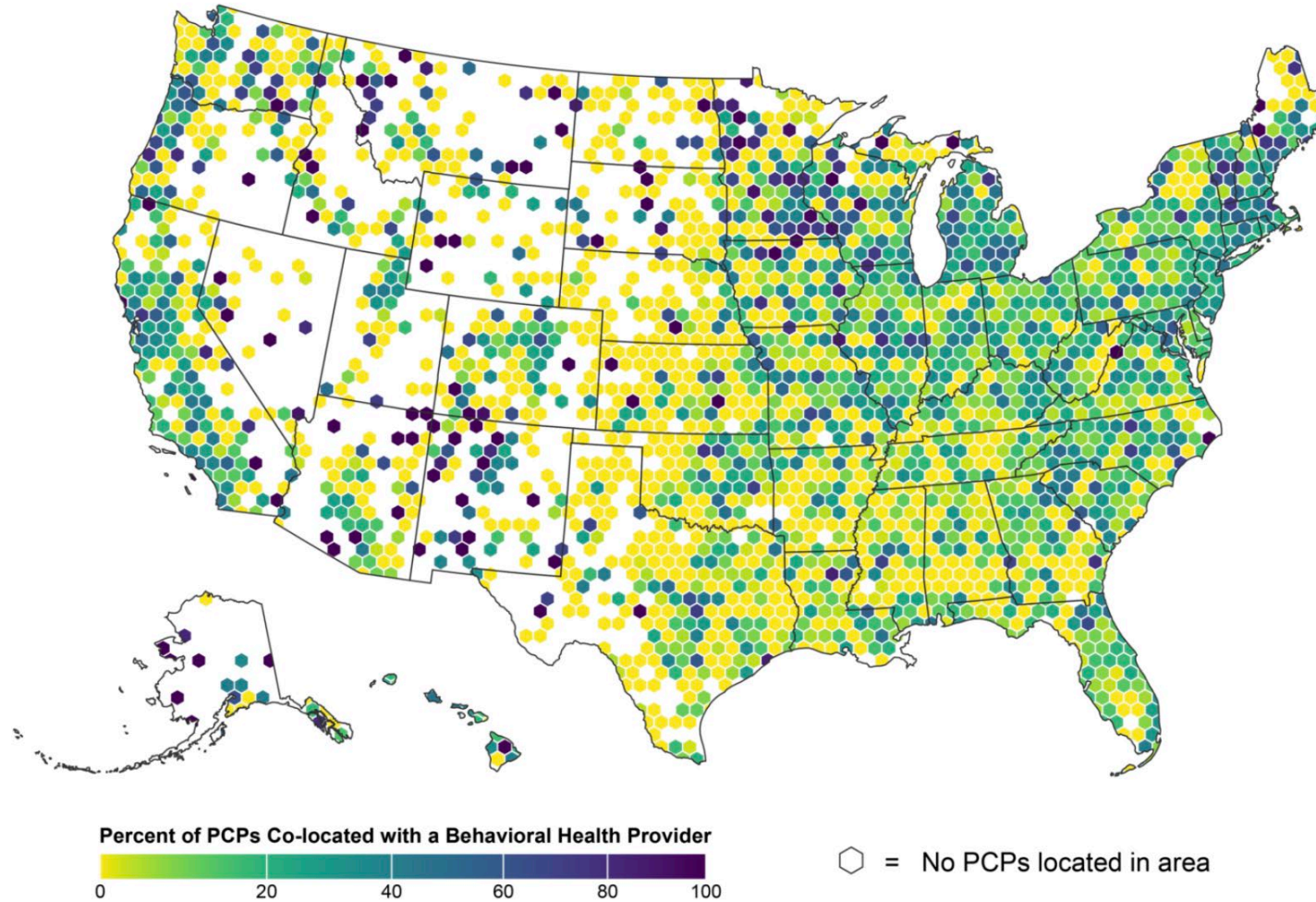
What type of organization do you represent?

- County Agency
- Hospital System
- IPA
- FQHC
- Other [Chat in]



Map of Primary Care Physicians Co-Located with Behavioral Health Providers

Percentage of Primary Care Physicians Co-Located with Behavioral Health Providers



Richman, E., Lombardi, B., Zerden, L., & Randolph, R. (2018) Where is Behavioral Health Integration Occurring? Mapping National Co-location Trends Using National Provider Identifier Data. Behavioral Health Workforce Research Center: http://www.behavioralhealthworkforce.org/wp-content/uploads/2018/12/NPI-Full-Report_Final.pdf

Sharing

1. How long have you been doing integrated care at your current organization?
2. How would you describe your integrated care set up?





California Quality
Collaborative

California Perspectives

Guest Speaker

Sarah McVay, PsyD

Regional Manager of Integrated Behavioral Health
Providence Medical Group



- What has been your biggest success around behavioral health integration?
- What is your biggest challenge around behavioral health integration?
- What are ways we can broaden integration in CA?

Survey Responses Challenges



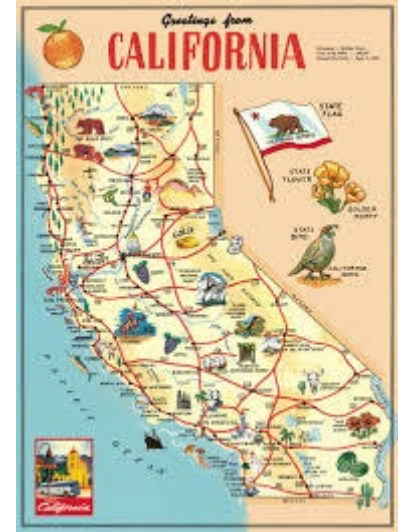
Peer Sharing

- What has been your biggest success around behavioral health integration?
- What is your biggest challenge around behavioral health integration?



Collective Brainstorming

- What are ways we can broaden integration in CA?
 - Groups to partner with?
- What are things we can do together as a group?
 - Regular workgroups?
- Topics
 - Advocacy Opportunities
 - Shared Training Opportunities
 - Financial Strategies
 - How to sustain a program
 - Develop solutions that benefit the greatest amount of people



Feedback!



CFHA Spring Virtual Conference – April 17-18



Breaking Silos, Building Bridges:

Uniting for Whole Person Health

Learn More:

<https://cfha.swoogo.com/2024springvirtualconference/4953746>

Stay Connected to CQC



California Quality
Collaborative

www.pbgh.org/program/california-quality-collaborative



For questions, feedback, or to receive our newsletter,
email us cqcinfo@pbgh.org

Thank you!

CQC



Kristina Mody
CalHIVE BHI Director
Associate Director,
Practice Transformation

kmody@pbgh.org



Anna Baer
Program Coordinator,
Care Transformation

abaer@pbgh.org

CFHA



**Daniela Vela
Hernandez**
CFHA Technical
Assistance Associate

dvhernandez@cfha.net



Mary Nickel-Nguy
Senior Manager,
Behavioral Health
Integration

mnickelnguy@pbgh.org



Neftali Serrano
Chief Executive Officer
Collaborative Family Healthcare
Association