



CalHIVE BHI Measure Performance

Provider Organization & Pilot Site – *Unblinded*

Updated October 2024



California Quality
Collaborative

CalHIVE BHI Depression Measures

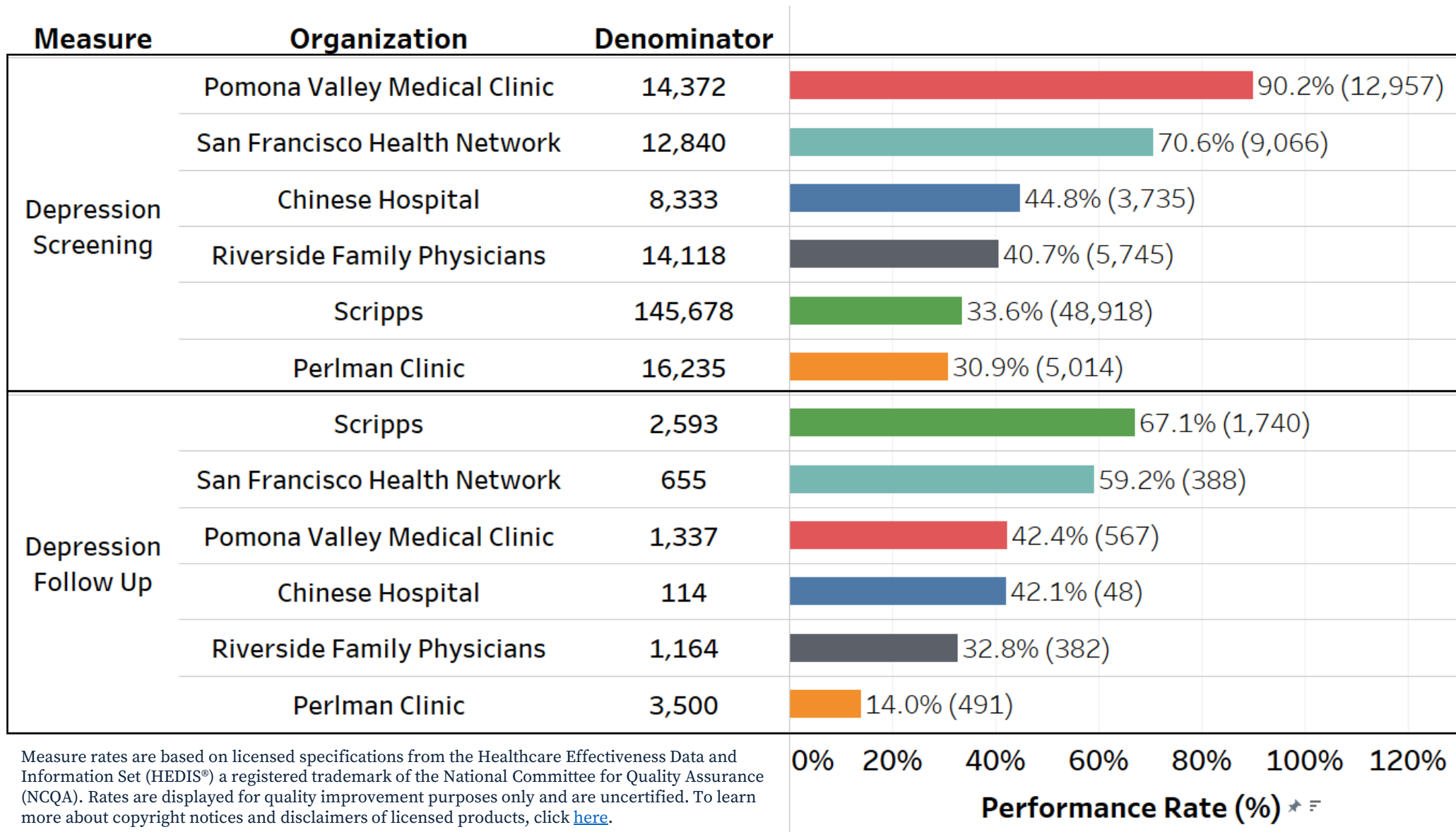
Depression Screening and Follow Up for Adolescents and Adults:

- The percentage of members 12 years of age and older who were screened for clinical depression using a standardized instrument and, if screened positive, received follow-up care.
 - **DSF1 – Depression Screening:** The percentage of members who were screened for clinical depression using a standardized instrument.
 - **DSF2 – Follow-Up on Positive Screen:** The percentage of members who received follow-up care within 30 days of a positive depression screen finding.

Depression Remission or Response for Adolescents and Adults:

- The percentage of members 12 years of age and older with a diagnosis of major depression and an elevated PHQ-9 score (>9), who had evidence of response or remission within 4–8 months of the elevated score.
 - **DRR1 – Follow-Up PHQ-9:** The percentage of members who have a follow-up PHQ-9 score documented within 4–8 months after the initial elevated PHQ-9 score.
 - **DRR2 – Depression Remission:** The percentage of members who achieved remission within 4-8 months after the initial elevated PHQ-9 score.
 - **DRR3 – Depression Response:** The percentage of members who showed response within 4-8 months after the initial elevated PHQ-9 score.

Depression Screening & Follow Up by PO (Mar. 2024)



*Two provider organizations are not represented in our data analysis due to current limitations with data reporting.

Measure rates are based on licensed specifications from the Healthcare Effectiveness Data and Information Set (HEDIS®) a registered trademark of the National Committee for Quality Assurance (NCQA). Rates are displayed for quality improvement purposes only and are uncertified. To learn more about copyright notices and disclaimers of licensed products, click [here](#).

Depression Remission or Response by PO (Mar. 2024)

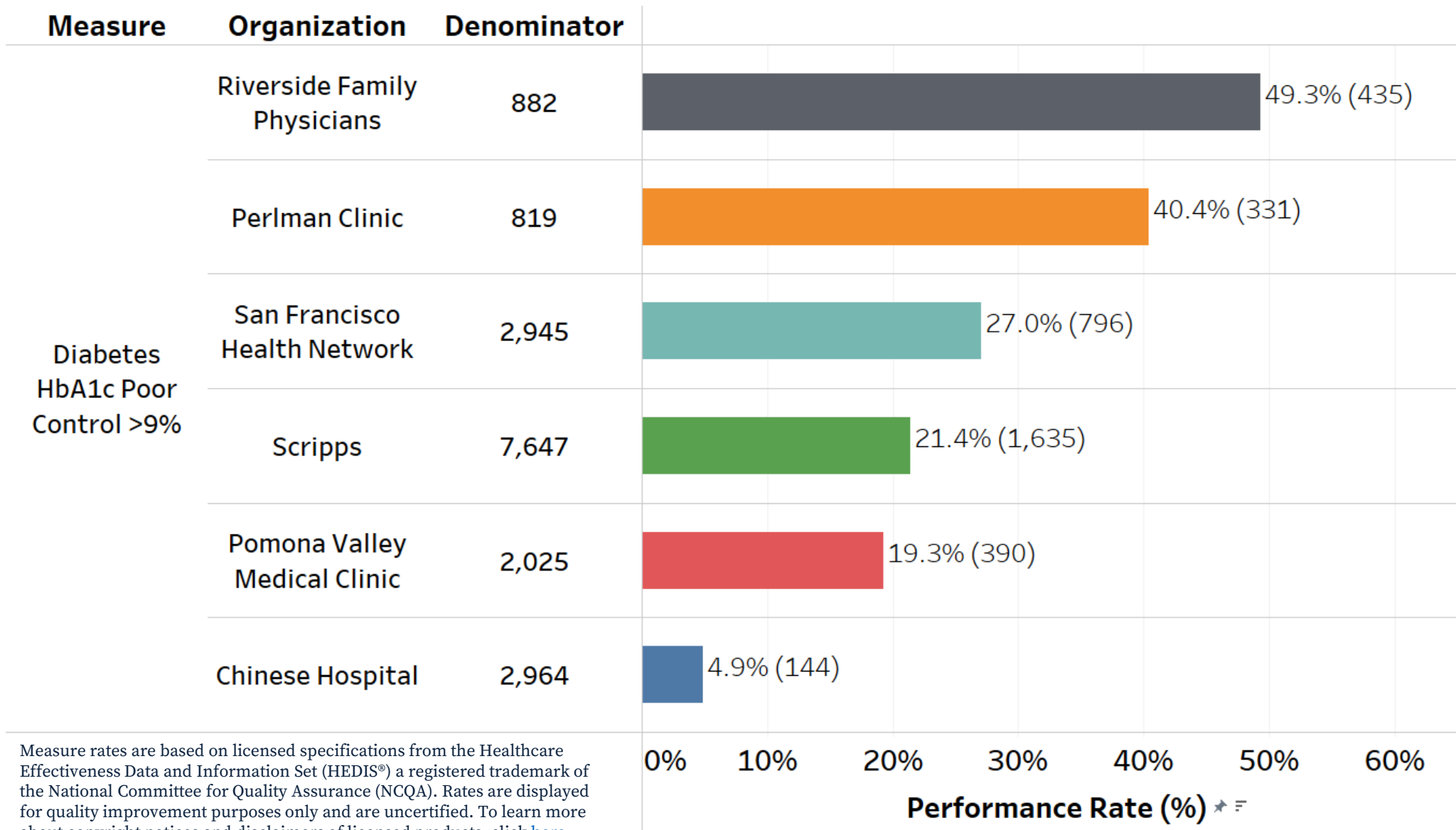
Measure	Organization	Denominator	
PHQ-9 Follow Up (4-8 Months)	San Francisco Health Network	357	54.9% (196)
	Pomona Valley Medical Clinic	880	28.4% (250)
	Perlman Clinic	619	19.9% (123)
	Scripps	572	8.9% (51)
	Chinese Hospital	34	0.0% (0)
Remission (4-8 Months)	Perlman Clinic	619	8.2% (51)
	San Francisco Health Network	357	7.6% (27)
	Scripps	572	3.3% (19)
	Pomona Valley Medical Clinic	880	2.5% (22)
	Chinese Hospital	34	0.0% (0)
Response (4-8 Months)	San Francisco Health Network	357	18.2% (65)
	Perlman Clinic	619	10.2% (63)
	Pomona Valley Medical Clinic	880	7.5% (66)
	Scripps	572	3.8% (22)
	Chinese Hospital	34	0.0% (0)

*Three provider organizations are not represented in our data analysis due to current limitations with data reporting for this measure.

Measure rates are based on licensed specifications from the Healthcare Effectiveness Data and Information Set (HEDIS®) a registered trademark of the National Committee for Quality Assurance (NCQA). Rates are displayed for quality improvement purposes only and are uncertified. To learn more about copyright notices and disclaimers of licensed products, click [here](#).

0% 10% 20% 30% 40% 50% 60% 70%
Performance Rate (%) ★

Diabetes HbA1c Poor Control >9% by PO (Mar. 2024)



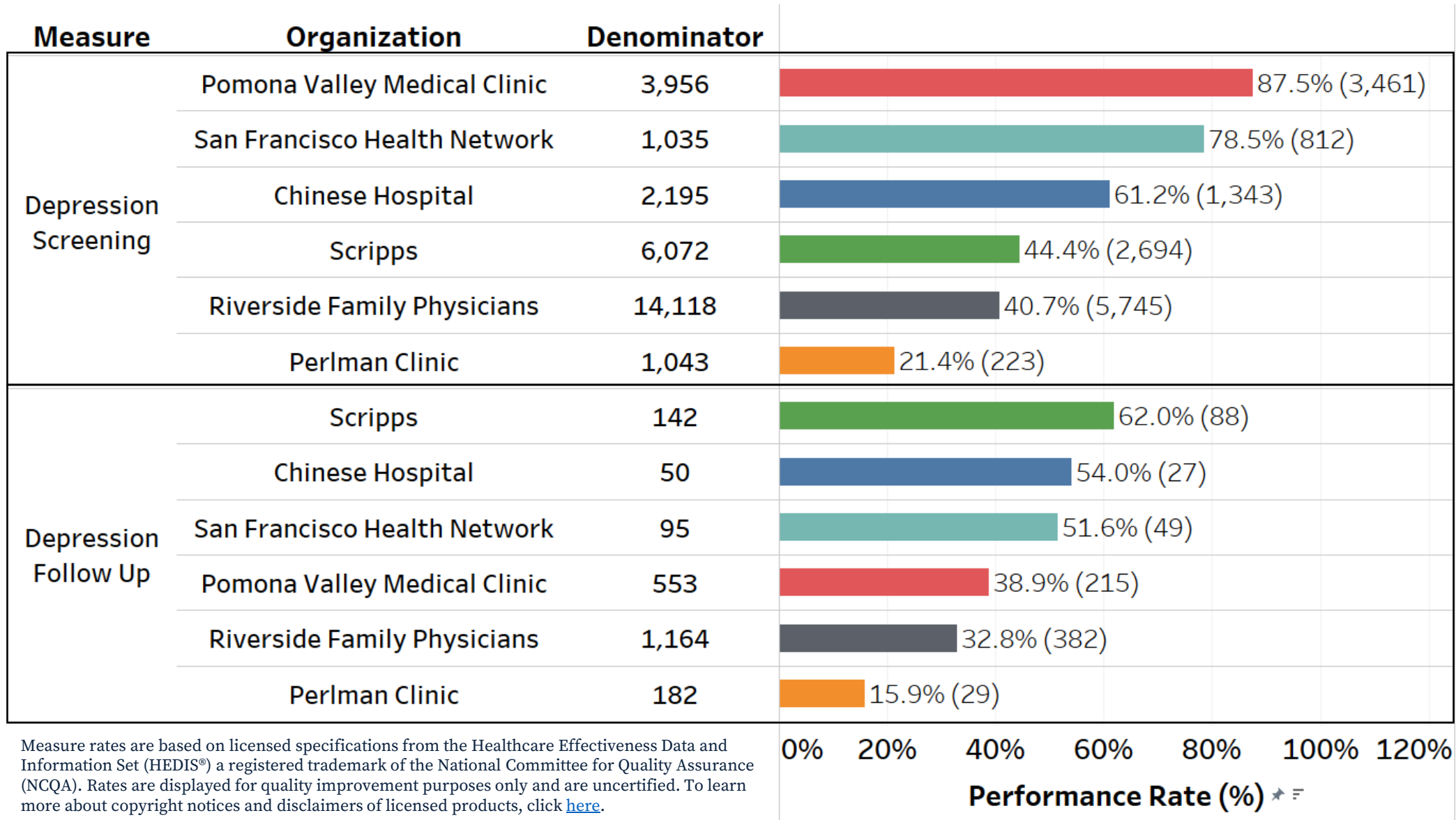
Lower is better

*Two provider organizations are not represented in our data analysis due to current limitations with data reporting.

Measure rates are based on licensed specifications from the Healthcare Effectiveness Data and Information Set (HEDIS®) a registered trademark of the National Committee for Quality Assurance (NCQA). Rates are displayed for quality improvement purposes only and are uncertified. To learn more about copyright notices and disclaimers of licensed products, click [here](#).

Performance Rate (%) ★

Depression Screening & Follow by Pilot Site (Mar. 2024)



*Two provider organizations are not represented in our data analysis due to current limitations with data reporting.

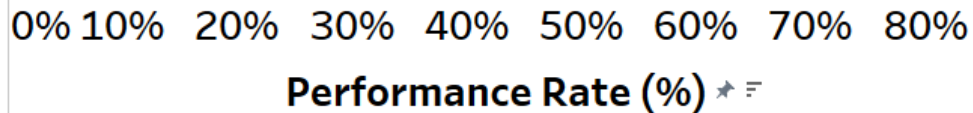
Measure rates are based on licensed specifications from the Healthcare Effectiveness Data and Information Set (HEDIS®) a registered trademark of the National Committee for Quality Assurance (NCQA). Rates are displayed for quality improvement purposes only and are uncertified. To learn more about copyright notices and disclaimers of licensed products, click [here](#).

Depression Remission or Response by Pilot Site (Mar. 2024)

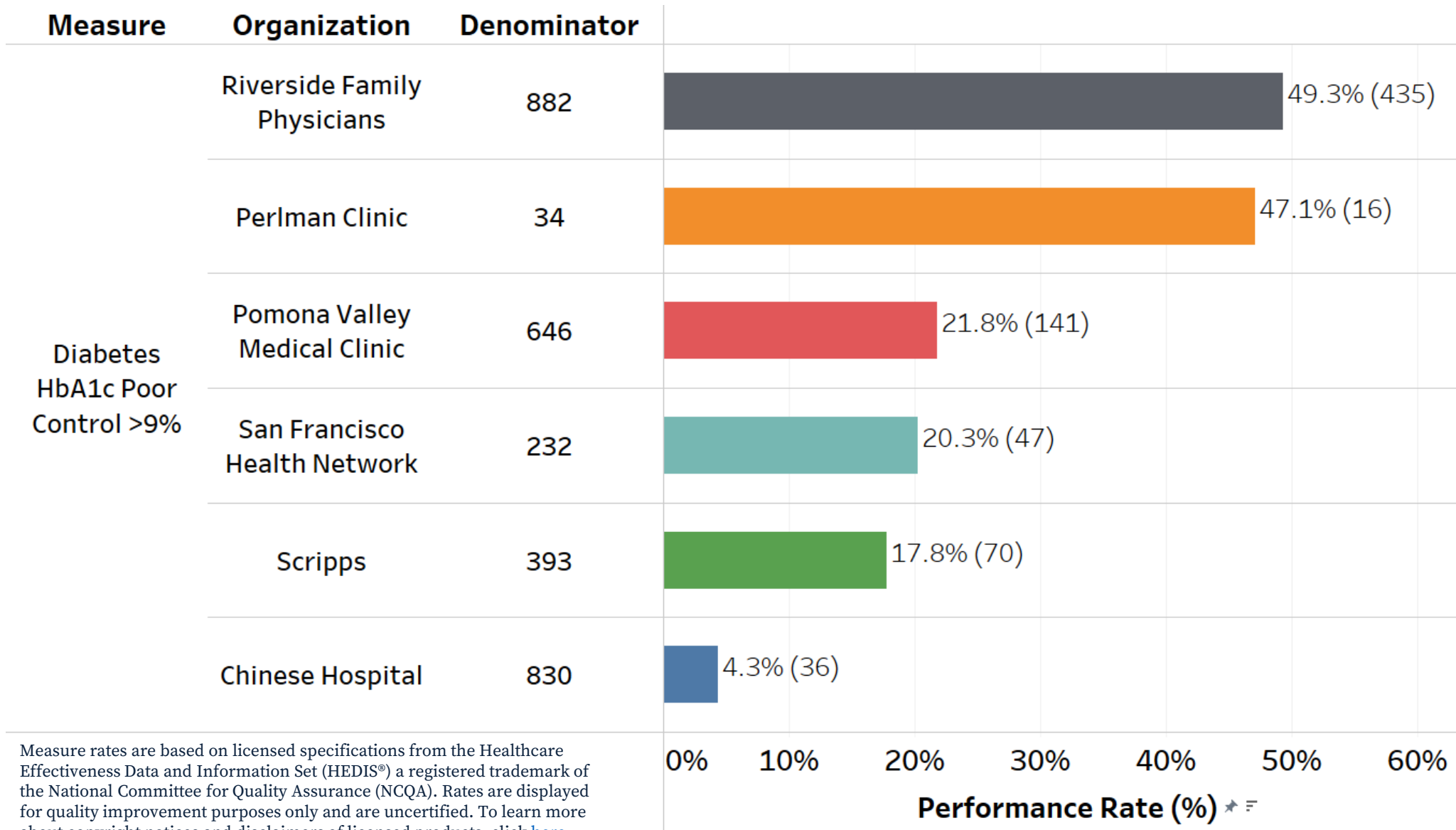
Measure	Organization	Denominator	
PHQ-9 Follow Up (4-8 Months)	San Francisco Health Network	51	62.7% (32)
	Pomona Valley Medical Clinic	427	32.3% (138)
	Perlman Clinic	28	14.3% (4)
	Scripps	18	11.1% (2)
	Chinese Hospital	22	0.0% (0)
Remission (4-8 Months)	San Francisco Health Network	51	7.8% (4)
	Scripps	18	5.6% (1)
	Perlman Clinic	28	3.6% (1)
	Pomona Valley Medical Clinic	427	3.5% (15)
	Chinese Hospital	22	0.0% (0)
Response (4-8 Months)	San Francisco Health Network	51	17.6% (9)
	Scripps	18	11.1% (2)
	Pomona Valley Medical Clinic	427	8.9% (38)
	Perlman Clinic	28	3.6% (1)
	Chinese Hospital	22	0.0% (0)

*Three provider organizations are not represented in our data analysis due to current limitations with data reporting for this measure.

Measure rates are based on licensed specifications from the Healthcare Effectiveness Data and Information Set (HEDIS®) a registered trademark of the National Committee for Quality Assurance (NCQA). Rates are displayed for quality improvement purposes only and are uncertified. To learn more about copyright notices and disclaimers of licensed products, click [here](#).



Diabetes HbA1c Poor Control >9% by Pilot Site (Mar. 2024)



Lower is better
 *Two provider organizations are not represented in our data analysis due to current limitations with data reporting.

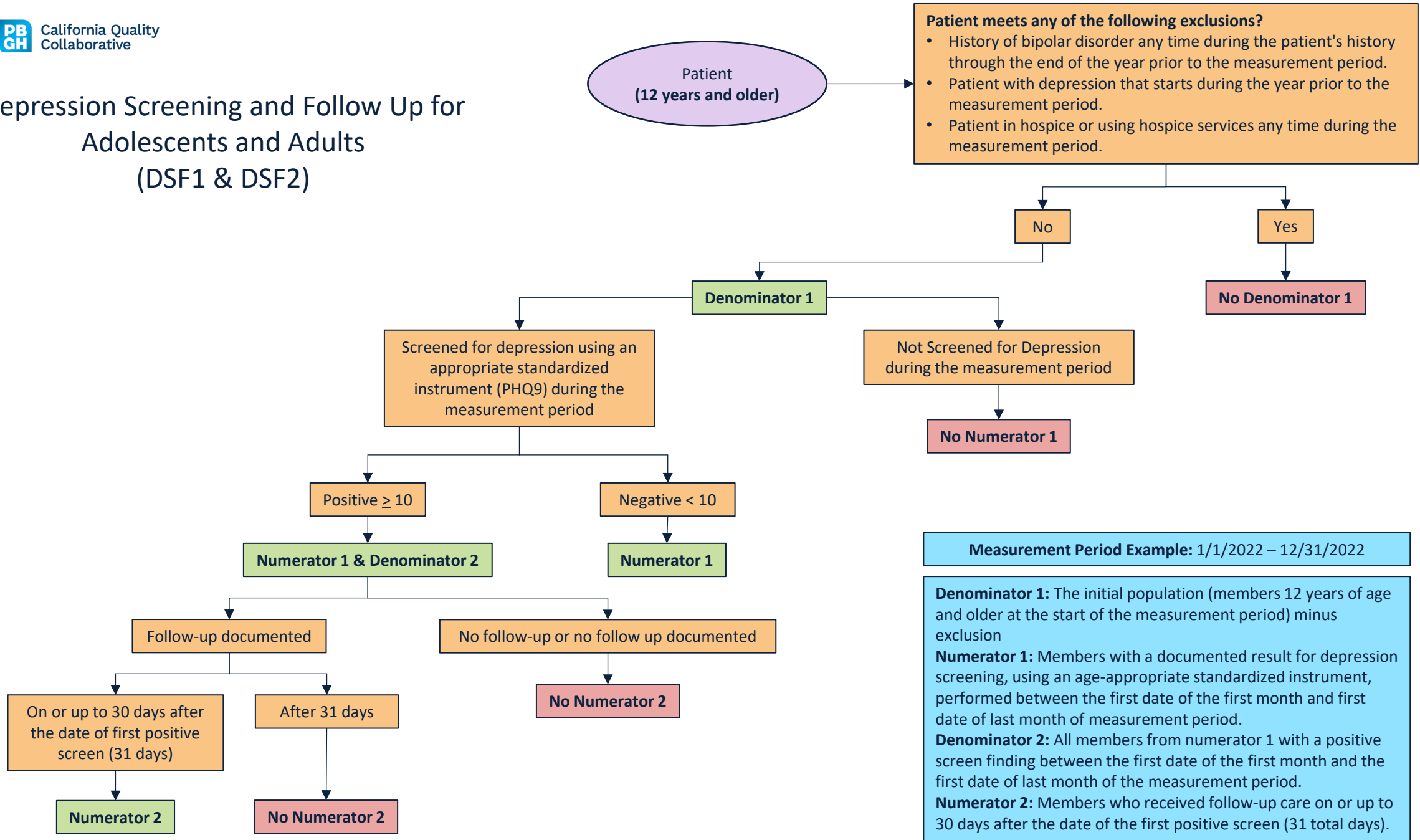
Measure rates are based on licensed specifications from the Healthcare Effectiveness Data and Information Set (HEDIS®) a registered trademark of the National Committee for Quality Assurance (NCQA). Rates are displayed for quality improvement purposes only and are uncertified. To learn more about copyright notices and disclaimers of licensed products, click [here](#).



California Quality
Collaborative

Appendix

Depression Screening and Follow Up for Adolescents and Adults (DSF1 & DSF2)



Measurement Period Example: 1/1/2022 – 12/31/2022

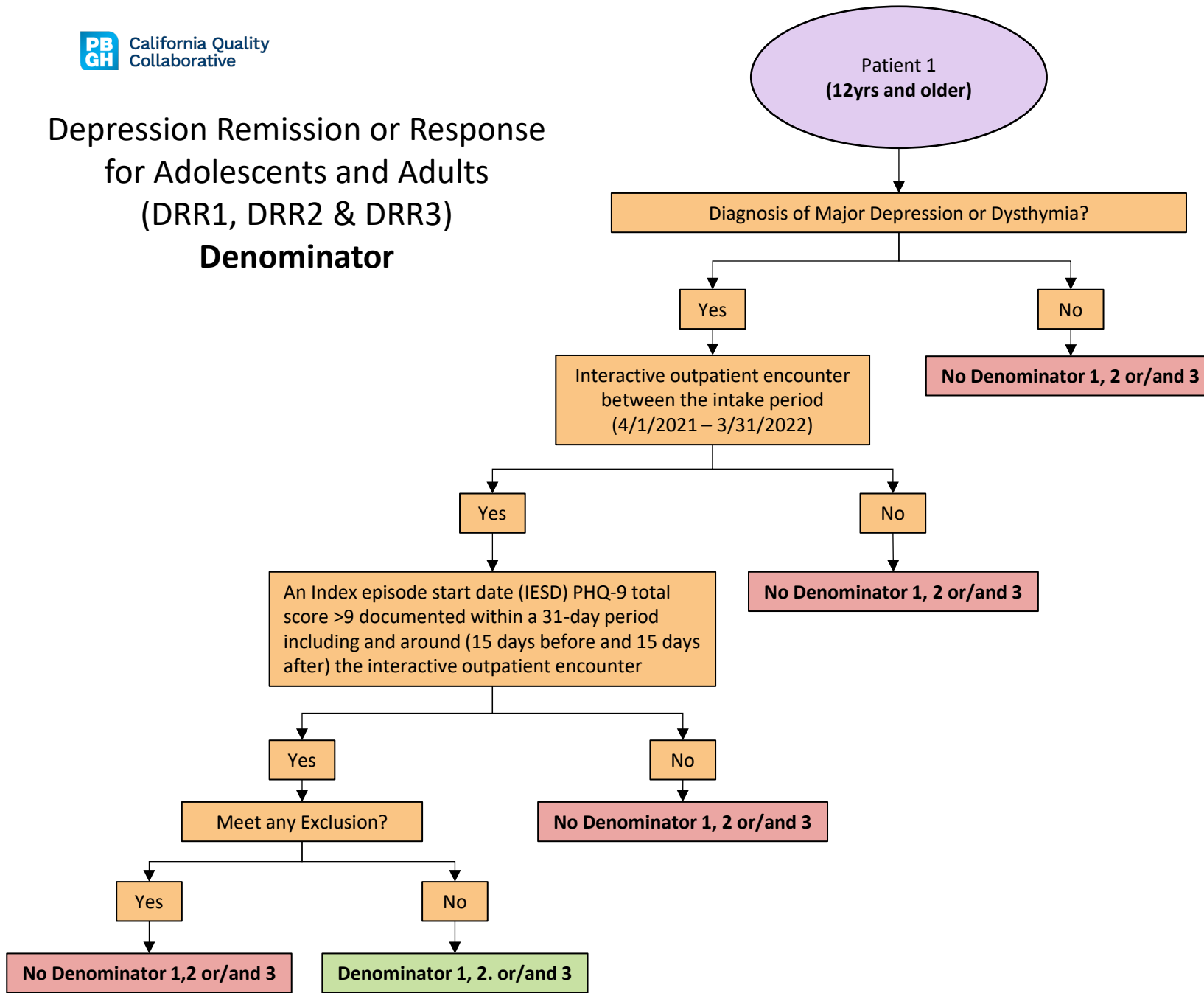
Denominator 1: The initial population (members 12 years of age and older at the start of the measurement period) minus exclusion

Numerator 1: Members with a documented result for depression screening, using an age-appropriate standardized instrument, performed between the first date of the first month and first date of last month of measurement period.

Denominator 2: All members from numerator 1 with a positive screen finding between the first date of the first month and the first date of last month of the measurement period.

Numerator 2: Members who received follow-up care on or up to 30 days after the date of the first positive screen (31 total days).

Depression Remission or Response for Adolescents and Adults (DRR1, DRR2 & DRR3) Denominator



Measurement Period Example: 1/1/2022 – 12/31/2022

IESD: Earliest date during the intake period where a PHQ9 greater than 9 is documented within a 31-day period including and around (15 days before and 15 days after) an interactive outpatient encounter with a diagnosis of major depression or dysthymia.

Intake Period: April 1 of the year prior to the Measurement Period through March 31 of the Measurement Period.

Exclusion: Patients with any of the following any time during the patient's history through the end of the measurement period:

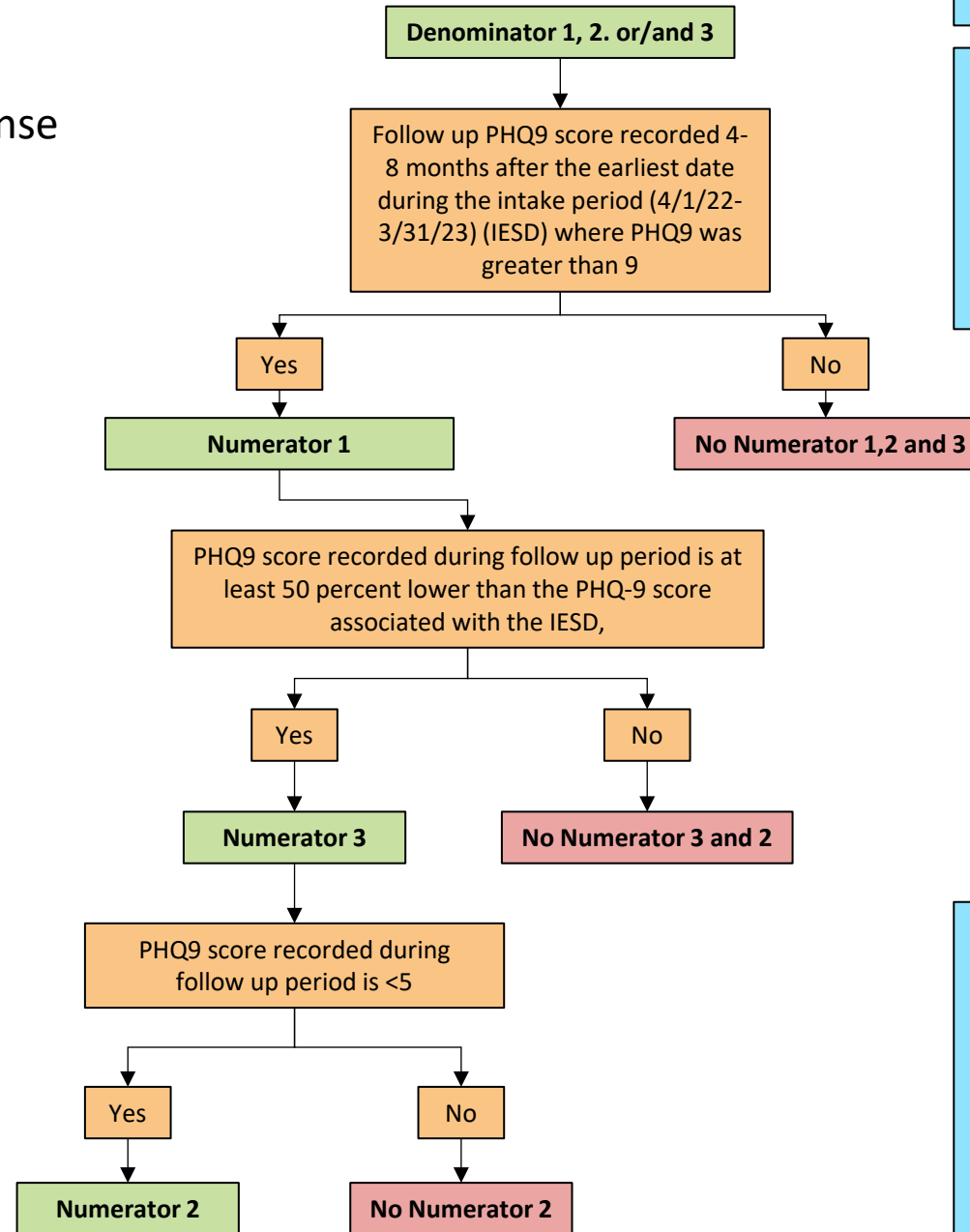
- Bipolar disorder.
- Personality disorder.
- Psychotic disorder.
- Pervasive developmental disorder.

OR

- Members in hospice or using hospice services any time during the measurement period.

Denominator 1, 2, and 3: Patients 12 years and older as of the start of the intake period who had an interactive outpatient encounter with a diagnosis of major depression or dysthymia and a PHQ-9 total score greater than 9 documented within a 31-day period from the encounter (-15/15+ days).

Depression Remission or Response for Adolescents and Adults (DRR1, DRR2 and DRR3) Numerator



Measurement Period Example: 1/1/2022 – 12/31/2022

IESD: Earliest date during the intake period where a PHQ9 greater than 9 is documented within a 31-day period including and around (15 days before and 15 days after) an interactive outpatient encounter with a diagnosis of major depression or dysthymia.

Intake Period: April 1 of the year prior to the Measurement Period through March 31 of the Measurement Period.

Numerator 1: A PHQ-9 total score in the member’s record during the depression follow-up period.

Numerator 2: Members who achieve remission of depression symptoms, as demonstrated by the most recent PHQ-9 score of <5 during the depression follow-up period.

Numerator 3: Members who indicate a response to treatment for depression, as demonstrated by the most recent PHQ-9 total score being at least 50 percent lower than the PHQ-9 score associated with the IESD, documented during the depression follow-up period.